

Cannery Creek Sewer Upgrade Project

Urban Utilities has been working on innovative solutions to manage the impacts of heavy rain in the Banyo and Northgate areas. The nature-based solution will reduce wet weather overflows, improve the health of Cannery Creek, and enhance liveability in the local area.



Project delivery

Work is being delivered in partnership with Urban Utilities and Fulton Hogan Utilities.

The project will continue to be delivered in stages due to working in and around a waterway, subject to weather and site conditions.

The construction methodology will vary around the project from Earnshaw Road to Southern Cross Way:

Station Avenue:

- The screening chamber construction is completed. *(During extreme wet weather, the sewer network is infiltrated with stormwater, and the network levels rise. Diluted wastewater will flow through this chamber and activates the screening process before sending the screened wastewater to the new pump station).*
- Installation of a new EROS (Emergency Relief Overflow Structure) and connecting into the existing maintenance hole.
- Excavation across the creek to the new wet weather pump station, lay pipework and join into the screening chamber.
- Excavation across the creek close to the pedestrian bridge to start earthworks for the weir wall.

- During the excavation along Station Avenue to Larwill Street, the road will remain closed to through traffic until the excavation machinery moves away from the roads edge. We thank you for your continued patience.
- Trimming of mangroves will occur prior to the start of excavation activities for Sediment Basin 1 works, followed by Sediment Basin 2 works.
- The excavated soil will be treated in Progress Park and reused to backfill the trench once the new pipe is in place.
- The construction activities, including earthworks for Sediment Basin 1, are scheduled to start in the coming months.

Vegetation along Cannery Creek:

There is a fully designed landscaping plan for the Cannery Creek project that will be implemented progressively as works are completed. The project team has been able to retain many of the established trees along the alignment. Where the design is unable to retain trees, removal or trimming is the only option, noting:

- Vegetation will be removed to construct the new sewer rising main, drainage swales and culverts, in-stream sediment basins, and the numerous access pathways along the creek.
- Trees will be trimmed when required to avoid impacts from construction activities. When the vegetation removal commences, access will be prohibited for safety, due to the size of the equipment.
- Access to the pedestrian bridge off Station Avenue will remain available to the public throughout the project.
- Impacts to the mangroves have been minimised as far as practical, as these provide valuable fish habitat within Cannery Creek. Additional habitat will be created in the project design to offset the temporary construction and minor permanent impacts.

Progress Park – Patterson Parade:

- A site compound has been established for the upcoming delivery and placement of pipes and pipe string area (where lengths of pipe are welded together and placed along the alignment). This pipe will be pulled into place during the horizontal directional drilling under Nudgee Road and for burying in the trench along Cannery Creek.
- Three small Casuarina (She-oak) trees have been removed to create an area to treat and temporarily store excavated soil for reuse:
 - The naturally occurring soil is classified as acid sulfate containing sediments and organic material that are formed under waterlogged conditions. Lime treatment is used to improve the pH levels of the soil, which will be reused once the new sewer infrastructure is installed.

Truck access into and away from Progress Park:

Delivery trucks are required to access the area from Toombul Road into Progress Park. (The truck route is shown below).



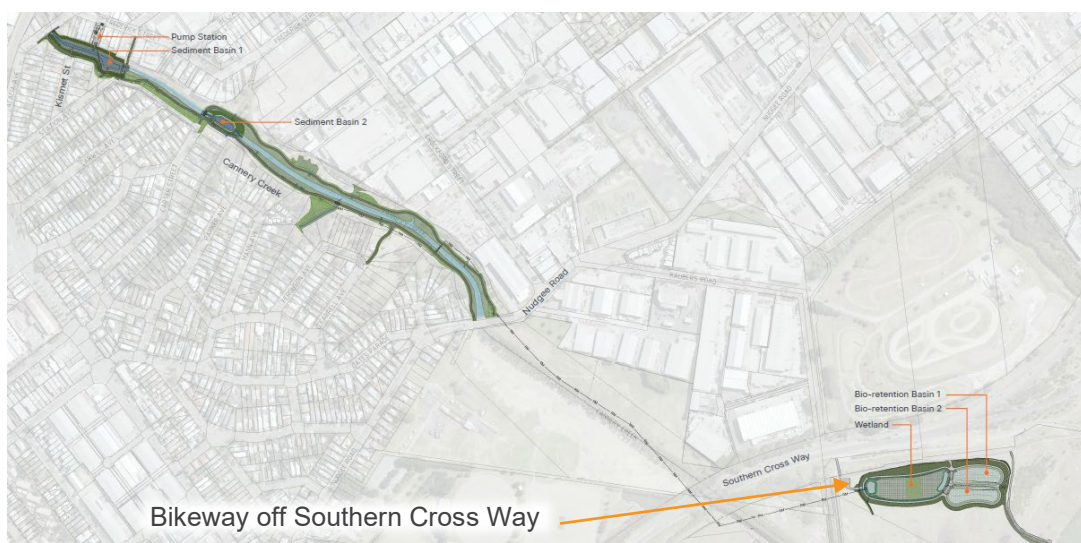
- The initial pipe delivery will involve approximately ten (10) semi-trailers.
- Throughout the project additional deliveries will occur intermittently.
- Deliveries will take place between 6:30am – 06:30pm Monday-Friday.

Nudgee Road:

- The main project site office location and minor storage of project materials has been setup.
- The horizontal directional drill site will be located West of the project on Nudgee Road. This location is required to drill under Nudgee Road to mitigate any impact to the road network.

Bikeway off Southern Cross Way – Construction of the Bioretention Basin 1 and 2:

- Trucks accessing and exiting the area, crossing the existing bicycle track.
- Users of the bikeway may need to be temporarily paused when trucks operate across the track.
- A dedicated crossing location will be built, and safety measures installed for all pedestrian and bike users.



What to expect as part of the project

- The construction of a weir wall near the Station Avenue pedestrian bridge.
- Installation of access paths along the creek alignment with an additional foot bridge crossing the creek at Carter Street.
- A new access path will create connectivity between Earnshaw Road and Nudgee Road for residents and community. This pathway will be installed alongside the retained trees as part of the beautification touches of the project.
- Landscaping is being designed to address minor drainage and extensive pooling of water after rainfall.



Completed Screening Chamber off Station Avenue



Frederick Street - Wet Weather Pump Station at 10m in depth

Urban Utilities and Fulton Hogan are excited to be delivering this sewer upgrade project, and we thank you for your continued patience and understanding while construction activities are underway.

Contact the project team

Let us know how you would like to be kept informed about the construction activities by registering your communication preferences:

Telephone: **1800 573 215**

Email: networks.community@fultonhogan.com.au

To view the final design, scan the QR Code, below.

