

Working beneath the streets

Hargreaves Avenue, Harte and Parker Streets, Chelmer

You can rely on us to keep things flowing. From time-to-time we need to upgrade your local water and wastewater pipes.

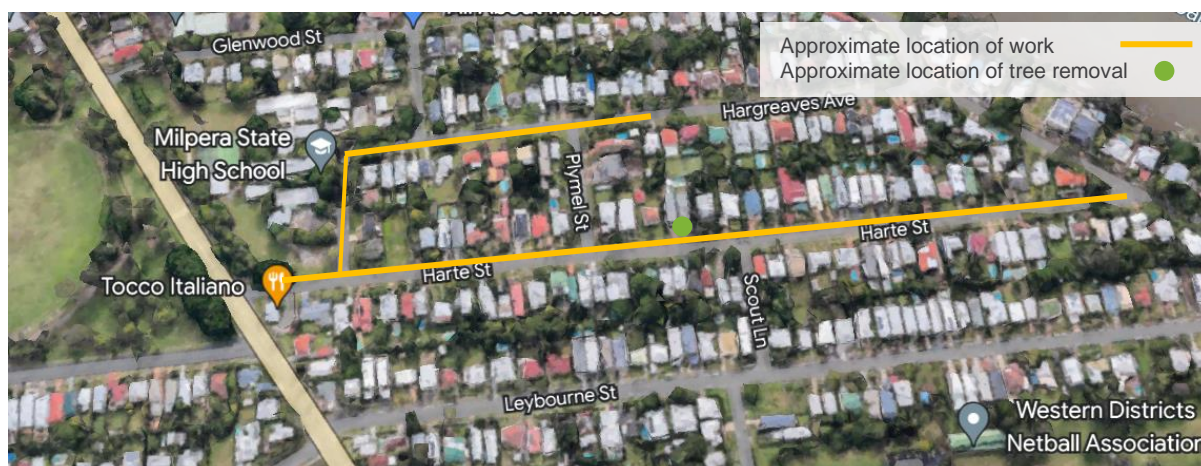
What's happening?

Our delivery partner, Downer WSP and their subcontractor Interflow, will soon start work on replacing sections of water pipe along **Harte Street, Parker Street and Hargreaves Avenue, Chelmer**. Construction will start on **Monday 5 February 2024**, and we expect to be finished in **three months**, weather and site conditions permitting.

Why is this happening?

Urban Utilities is committed to excellence in water and sewerage services. As part of this commitment, we will be upgrading important infrastructure near your property. Upgrades to the network will ensure reliability and sustainability of water services in your area.

Map of construction area



How will impacts be managed?

Safety – barriers and signage around work areas will be in place to keep everyone safe.

Hours – most of the work will take place between **6:00am and 6:00pm, Monday to Friday**. In some situations, such as construction works in front of Milpera State High School, we may need to carry out works during the night, between 6:00pm to 6:00am, Sunday to Thursday. We will notify you before any night work takes place. Traffic management will be in place to look after the safety of our pedestrians and road users.

Traffic changes – possible lane and footpath closures around work sites. On-street parking may be unavailable in some areas. Traffic management will be in place to look after the safety of our pedestrians and road users.

Temporary water outages – we'll give you at least three days' notice before any planned interruptions to your water supply. Keep a look out in your letterbox for these updates.

Noise and dust – there will be varying levels during excavation. We'll minimise this where we can.

Asbestos removal – there are no health risks associated with drinking water that has been transported in asbestos cement pipes. Our licensed asbestos removers will safely remove these pipes by wetting down the asbestos cement before it is removed and disposing of these pipes in a special bin.

Tree removal or trimming – may be required at the worksite. Trees required to be removed will be marked with "R" in advance of removal. Any removed trees will be replaced with Council specified species and replanted in approved areas, following project completion.

Temporary work sites and holding area – temporary storage compounds will be located along the project alignment. These areas are used to store pipe, materials, and machinery during construction.

Temporary water service (bypass pipe) – Your property may be connected to a temporary water service pipe to maintain your water supply. The temporary pipe is usually laid across driveways. A crossing ramp will be used to maintain safe vehicle access and to protect the pipe. We recommend that you cross the ramp at a slow speed without stopping to avoid damaging it. This temporary water supply is the same quality of drinking water as your normal service; however, you may notice a slight reduction in water pressure.

Restoration – temporary restoration will occur while work is in progress. At completion, we'll restore as close to the original condition as possible including roads, driveways, footpaths, and nature strips that have been impacted by our works.

Find out more:

We'll provide updates as the project progresses, or to get in touch:

- Contact: **Jo Rogers** on **0447 782 160** or **after hours 1300 992 605**
- Email / register for project updates: **Community.Enquiries@downergroup.com**
- For Information on asbestos pipes, visit: **urbanutilities.com.au/network-upgrades/current-projects/water-main-replacement-works-asbestos-cement-pipes-information-page**
- Visit: **urbanutilities.com.au/network-upgrades** or **scan the QR code**



Thank you for your patience and understanding during this essential work.