

TANKER FILLING STATION

Railway Street, Grantham

Urban Utilities is committed to excellence in water and wastewater services that enhance the liveability of our communities. As part of this commitment, we will be upgrading and installing new important infrastructure in your local area.

What's happening?

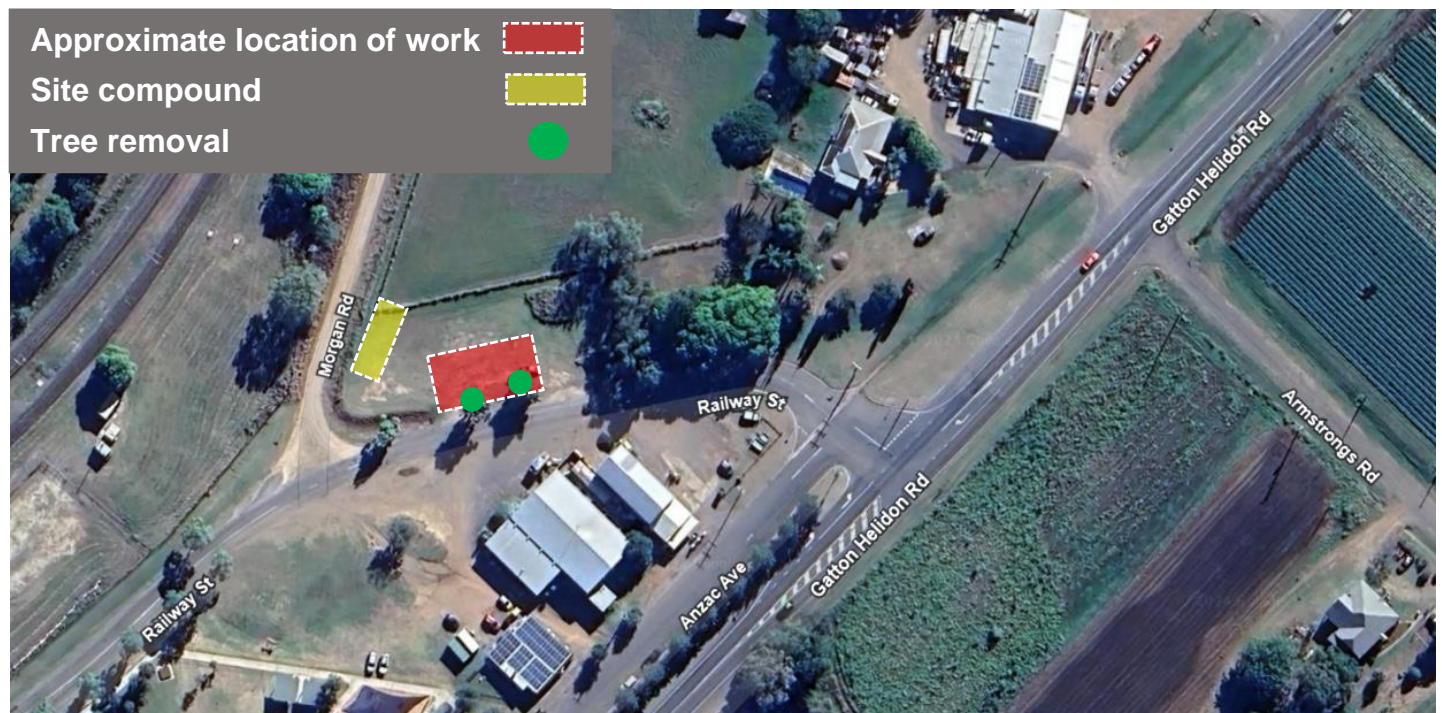
Our delivery partner, **Diona**, will soon commence works to install a new tanker filling station on **Railway Street**, between **Anzac Avenue** and **Morgan Road**, Grantham.

Construction will commence from **Monday 9 December 2024**, and will take up to **four months** to complete, weather and site conditions permitting. *During the holiday period, work will pause from Friday 20 December 2024 and resume on Monday 6 January 2025.*

Why is this happening?

The installation of the new tanker filling station aims to provide a water supply option for residents requiring access to drinking water who are not connected to the water supply network and have their on-property supply run low.

Map of construction area



What to expect?

Hours - Most of the work will take place during the day, between **6:00am** and **6:00pm, Monday to Friday**. In some situations, night works may take place between 7:00pm and 5:00am and/or Saturdays 8:00am to 5:00pm. We will keep you informed of any changes to working hours.

Crews, trucks and equipment - During construction, nearby residents and businesses may experience increased vehicle movements from heavy machinery and minor vibrations. We'll minimise this where we can. Safety barriers will be in place to keep everyone safe.

Noise/dust - Residents may experience varying levels of noise and dust from construction machinery and changed vehicle movements. We'll minimise these where we can.

Changed traffic conditions including lane closures and stop/go traffic control will be in place to manage the flow of traffic, ensure pedestrian safety, and maintain local access during deliveries to site. Traffic control will be in place to manage the flow of traffic, ensure pedestrian safety and maintain local access. Reduced speed limits will be in place during work hours.

Please take care and observe all signage, speed limits and any directions given by Traffic Controllers.

Safety fencing, barriers and signage will be installed around work areas to keep everyone safe.

Water outages - To complete this important work, there may be short-term, temporary interruptions to your water supply. The community will be notified in advance of any water interruptions.

Temporary site compound and holding area – A temporary compound will be located on Morgan Road, near the corner of Railway Street, Grantham. This area will be used to store essential project materials and machinery during construction.

Vegetation and tree removal - We understand that flora and fauna are highly valued by the community. To allow for these essential works, tree and vegetation removal may be required in line with Lockyer Valley Regional Council and State Government requirements. These activities will be reviewed by a qualified Arborist and works will be monitored by a Fauna Spotter.

Restoration – We'll restore all work areas as close to the original condition as possible, once the work is complete.

Our commitment – The project team will minimise the construction impacts to the extent possible and review work methods as required. We will also keep directly impacted neighbours informed by providing regular construction updates throughout the project.

For more information

- Phone **Diona's Customer Assistance** on **1300 13 13 38**
- Email **UUteam@diona.com.au**
- Visit **urbanutilities.com.au/network-upgrades/current-projects**
- Register for project updates: **UUteam@diona.com.au**

Thank you for your patience while we complete this important work.



To go into the draw to win a **\$100 gift voucher**, please scan the QR code to complete a survey at any stage during the project, your feedback is important to us.