

SEWER WORK IN YOUR AREA

July 2022

About the S1 Main Sewer Upgrade

The S1 main sewer was constructed a century ago and currently services more than 60 per cent of Brisbane. Vital maintenance has already occurred on the section from James Street, Fortitude Valley along Kingsford Smith Drive, Hamilton, to the Eagle Farm pump station.

The upgrade of this S1 main sewer section involves relining works along Kingsford Smith Drive: Hunt to Cooksley Streets to improve performance and ensure the stability of the wastewater network.

What's happening?

From mid-July, crews will reline the section on Kingsford Smith Drive between Hunt and Cooksley Streets, **over four weeks (subject to weather and site conditions) from Monday 24 July 2022.**

The sewer will be relined using a polyethylene liner reinforced with steel ribs to renew the structural integrity and flow capacity of the pipeline.

The liner will be delivered to site on spools as a continuous steel reinforced polyethylene strip (profile). It will be installed using a winding machine placed in an existing maintenance hole or access chamber.

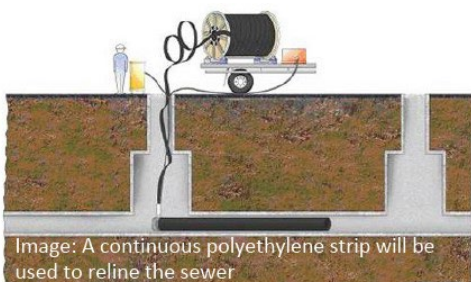


Image: A continuous polyethylene strip will be used to reline the sewer

The winding machine takes the liner profile strip and winds in a continuous helix, welding the profile edges together.

After installation, the liner is encased with cement grout to fill the gap between the liner and the existing pipeline wall.

The spiral relining process will allow the work to be completed while some flow is still present in the sewer and will avoid the need for sewage diversions or isolations. In addition, spiral relining requires a relatively small site footprint and limits construction impacts.

Why is sewer relining done at night?

Maintenance holes used to access the sewer are generally located on the edge of the road or in the median, in high traffic volume areas.

Flow levels in the sewer line are lower at night and gas levels are reduced.

To ensure the safety of workers and minimise traffic disruptions, relining is usually carried out at night, **Sunday to Thursday, between 8pm and 5am** to allow traffic diversions or flow isolations.

What can I expect?

To ensure the safety of workers, the pipeline will need to be ventilated at various times and some odour may be detected when this occurs. The odour will be monitored and mitigated, to the extent possible, without compromising safety.

Relining also involves **noise-generating activities** including:

- water pressure cleaning powered by a compressor
- breaking bitumen around the maintenance hole using a jackhammer and removing concrete
- installation of a steel road plate each night to cover the works prior to reopening the road for daytime traffic
- installation of winding machinery including levelling the base of the hole if required
- spiral winding work, including the use of motorised air circulation fans for ventilation
- cement grouting powered by a compressor
- CCTV inspection and reinstatement of the maintenance hole and road at completion.

How will the impacts be managed?

The project team will use traffic management for the safety of motorists and pedestrians.

Our teams will also minimise noise impacts to the extent possible. Measures include using equipment with in-built noise suppression, monitoring noise at the source, and minimising reversing when possible. Work methods will also be reviewed on a regular basis.

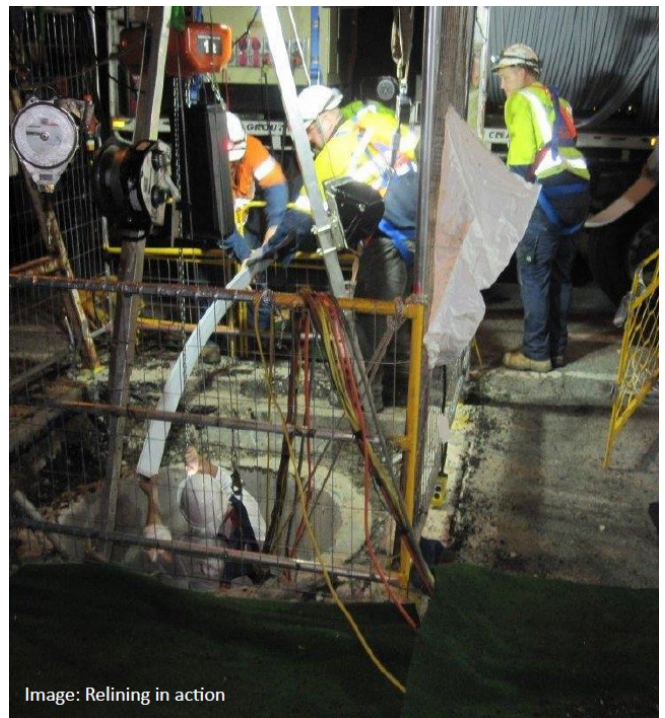


Image: Relining in action

Thank you for your patience during this essential work.

Find out more

Contact us by calling 13 26 57 (8am – 6pm) or 13 23 64 (24/7), or email us at community.feedback@urbanutilities.com.au, or visit <https://urbanutilities.com.au/S1mainsewer>

General enquiries **13 26 57** (8am-6pm weekdays)

Faults and Emergencies **13 23 64** (24/7)

urbanutilities.com.au

